

We Image Your Needs.



Quantum Cam™



Gamma Camera
for General Purpose Nuclear Medicine



Highly flexible detector positioning with small gantry footprint.

Fixed patient table with translating gantry reduces room size requirement.

Truly open gantry allows for greater patient comfort.



Variable Angle SPECT camera

Handle releases balanced detector for easy setting of geometry.

Full access for upright imaging and imaging of patients in a hospital bed.

No obstructions allow for easy positioning of patients in wheelchair or stretcher.

System allows for all SPECT procedures

- 180 degrees geometry for general purpose SPECT, whole-body and planar imaging.
- 90 degrees for cardiac SPECT and planar imaging.
- Single and dual detector planar imaging.

ClearSight™ user interface

Intuitive Windows-based graphical user interface guides user through procedures with minimal interaction.

Optional mobile stand offers convenient access to ClearSight acquisition user interface.

Integrates seamlessly to most commonly used processing workstations.

Whole-body imaging

54 cm (21 in.) by 31 cm (12 in.) detectors.

No truncation of arms and shoulders.

Scan range of 205 cm (6.7 ft.).

Planar imaging

Full flexibility to position detectors.

- Single detector imaging.
- Dual detector imaging.

QuantumCam™ with removable patient table allows upright imaging.

- Ideal for thyroid, body extremities.
- Renal imaging.
- Seated, gurney, bed imaging supported.

Cardiac SPECT

19–56 cm (7.4–22 in.) scan diameter.

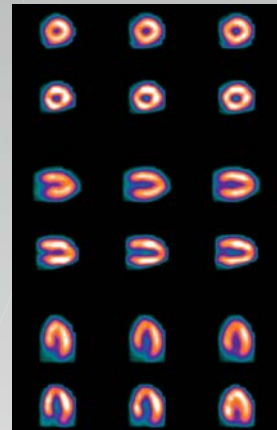
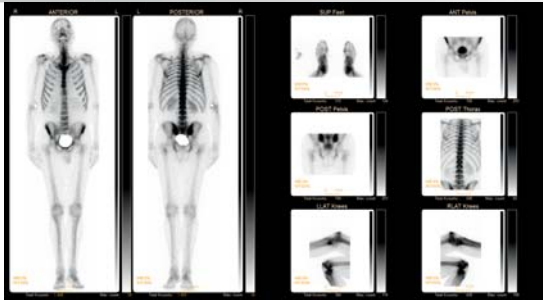
Simplified workflow (setup).

- Circular and contoured orbits.
- Clockwise and counter clockwise rotation.

Wider detectors and optional Auto Body Contouring enable “click to scan” speed.

General purpose SPECT

With a 16–68 cm (6.3–26.7 in.) scan diameter range, enables imaging of all patients and extremities without compromise.



Main Specifications

QuantumCam™

Detector Performance

Crystal thickness	9.5 mm
UFOV	54×30 cm (54×31 cm imaged FOV)
Energy Range	55–400 keV
Intrinsic Spatial Resolution (UFOV)	<3.9 mm (FWHM), <7.8 mm (FWTM)
Intrinsic Spatial Linearity (UFOV)	<0.5 mm (Absolute), <0.2 mm (Differential)
Intrinsic Energy Resolution (UFOV)	<9.7 %
Intrinsic Flood Field Uniformity (UFOV)	<3.5 % (Absolute), <2.5 % (Differential)
Maximum Count Rate wo. Scatter	>300 kcps
Collimators	LEGP, LEHR, MEGP, HEGP, LEUHR, Pinhole

System Performance

System Spatial Resolution wo. Scatter (LEHR)	<7.7 mm (FWHM), <15 mm (FWTM)
System Planar Sensitivity (LEGP)	270 cpm/uCi
SPECT reconstructed spatial resolution without scatter @ 15 cm radius (LEHR)	<12 mm
Total Body system spatial resolution @ 10 cm wo. scatter, 10 cm/min scan speed	<9.0 mm
Volume sensitivity per axial centimeter (LEHR)	>10000 cps/Mbq/cm ²

Gantry

Foot print	(W) 234 cm × (L) 290 cm × (H) 214 cm
Room Size Requirement (Min)	2.8 m × 3 m (9.2' × 9.8')
SPECT rotation	+/- 180°
Angular sampling	0.7°–5.6°
Speed of rotation	<1 RPM
Scan diameter	16–68 cm
SPECT manual rotation speeds	0.2–0.9 RPM
Detector relative positions	90° and 180°
Total Scan length + UFOV	174 cm + 31 cm
Total Body Scan speed	1–180 cm/min
Brain reach	3.5" (9 cm)
VORR (Vertical Outer Room Reach)	200 cm (Max)
HORR (Horizontal Outer Room Reach)	100 cm (Max)

Patient Table

Dimensions (Patient Pallet Support)	(L) 248 cm × (W) 52 cm
Pallet type	Aluminum
Thickness	3.0 mm
Attenuation	10% @ 140 keV
Pallet dimensions (SPECT)	(L) 125 cm × (W) 38 cm
Height (from floor = loading height)	72 cm
Weight capacity	200 kg (441 lbs.)

[DATA SUBJECT TO CHANGE]

We Image Your Needs.



**QuantumCam™ is designed,
developed and manufactured
by DDD-Diagnostic A/S in Denmark.**

DDD is a well known OEM manufacturer of gamma camera systems. Early 2012 the first products under own brand were also released to the market.

DDD was founded in 1987 and has been involved in design and development of some of the most successful gamma camera systems in cooperation with major international vendors of medical diagnostic imaging equipment.

DDD-Diagnostic A/S

Dr. Neergaards Vej 5E
DK-2970 Hørsholm
Denmark

www.ddd-diagnostic.dk

1BRO2817-C04